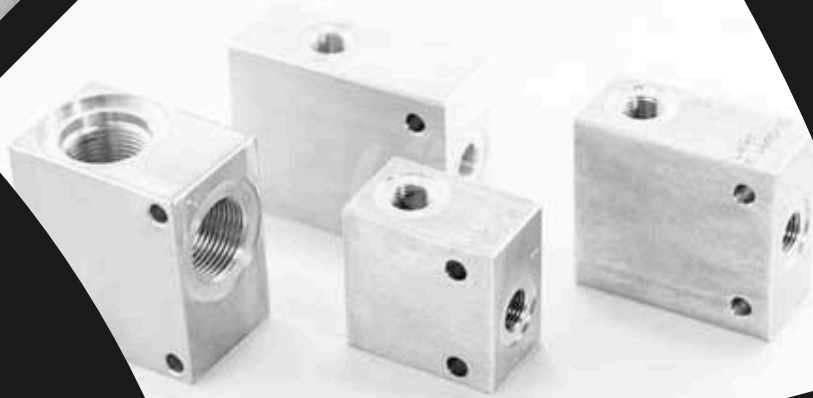




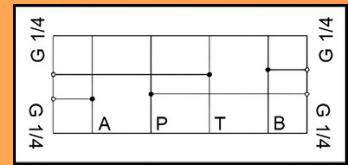
# STANDARD MANIFOLD BLOCK



## 01. Adaptor Plate

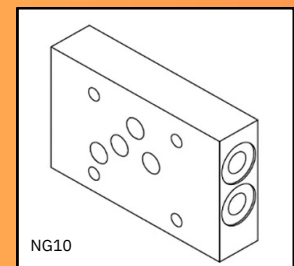
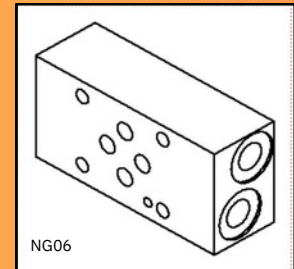
### Description:

Adaptor plate is an intermediate plate which allows the hydraulic connection between a Directional Valve and Manifold Block. It also provides connections to measure pressure in line P, A & B.



### Technical Specifications:

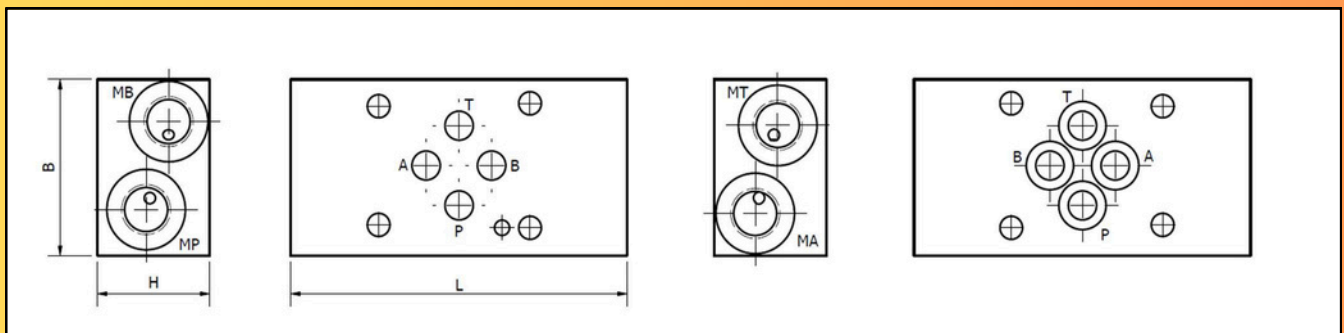
Measuring port connection	as per ISO 228
Valve mounting position	as per CETOP 3, CETOP 5
Material (Pressure rating)	GGG40 (315 bar) C45 (400 bar)
Surface coating	Code "MN": Manganese phosphating No code: No surface coating
Supply scope	Code "O": Adaptor plate with O-ring No code: Adaptor plate without O-ring



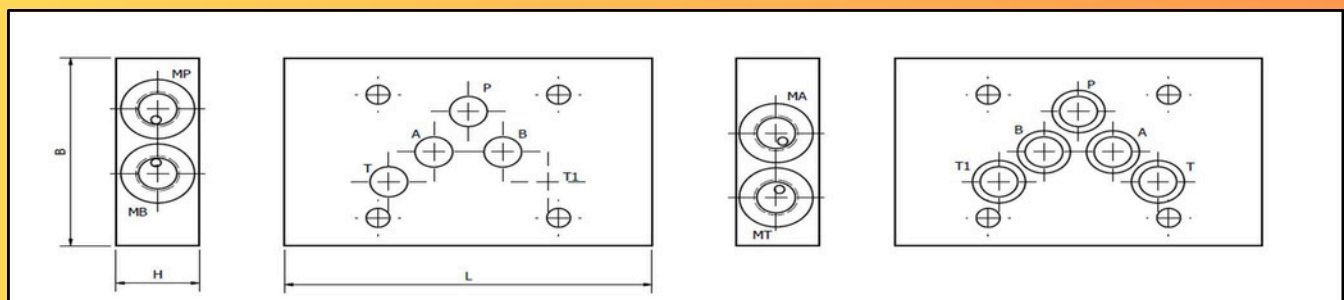
### Selection Table:

Model code	Plate size (mm)			Measuring port(s)	Port size	O – Ring details
	L	B	H			
CYADP-NG06-1/4-MN-O	90	45	30	MA, MB, MP, MT	G 1/4"	9.81x1.5
CYADP-NG10-1/4-MN-O	110	70	25	MA, MB, MP, MT	G 1/4"	13x1.6

### Dimension details:



(NG06)



(NG10)

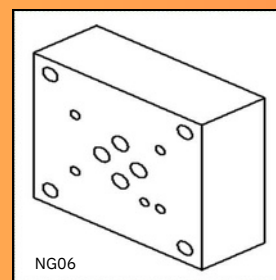
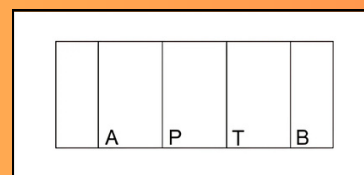
## 02. Sub Plate

### Description:

Sub plate is a mounting plate which allows the mounting of directional valve and to provide piping interface.

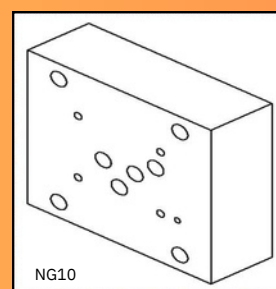
### Technical Specifications:

Port connection	as per ISO 228
Valve mounting position	as per CETOP 3, CETOP 5
Material (Pressure rating)	GGG40 (315 bar) C45 (400 bar)
Surface coating	Code "MN": Manganese phosphating No code: No surface coating

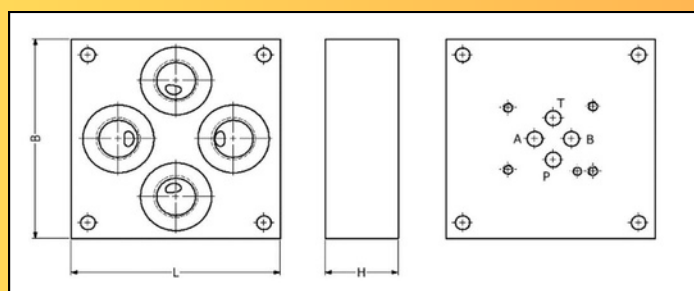


### Selection Table:

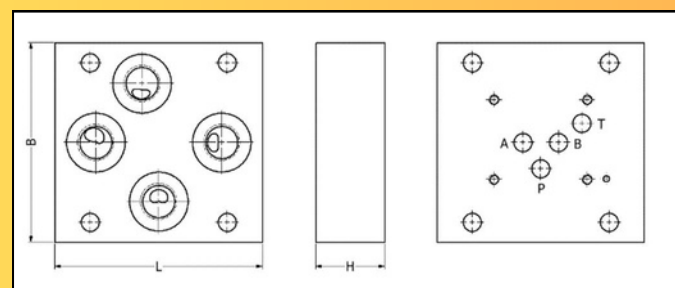
Model code	Plate size (mm)			Port size
	L	B	H	
CYSP-NG06-1/4-MN	100	56	25	G 1/4"
CYSP-NG06-3/8-MN	80	80	30	G 3/8"
CYSP-NG06-1/2-MN	80	80	30	G 3/8"
CYSP-NG10-1/2-MN	120	115	40	G 1/2"
CYSP-NG10-3/4-MN	120	115	40	G 3/4"
CYSP-NG10-1-MN	163	114	42	G 1"



### Dimension details:



(NG06)

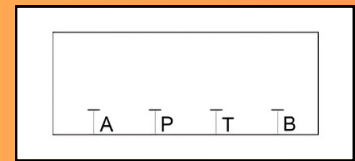


(NG10)

### 03. Cover Plate

#### Description:

Cover plate is a blanking plate which is used to blank hydraulic pattern on manifold block.

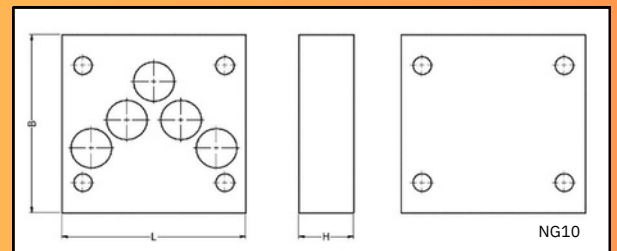
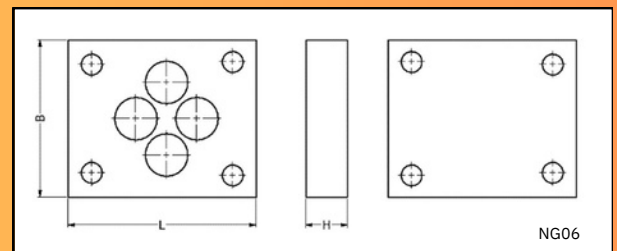


#### Technical Specifications:

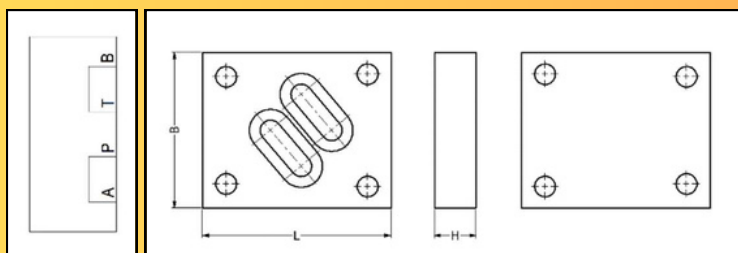
Mounting pattern	as per CETOP 3, CETOP 5
Material (Pressure rating)	GGG40 (315 bar) C45 (400 bar)
Surface coating	Code "MN": Manganese phosphating No code: No surface coating
Supply scope	Code "O": Cover plate with O-ring No code: Cover plate without O-ring

#### Selection Table:

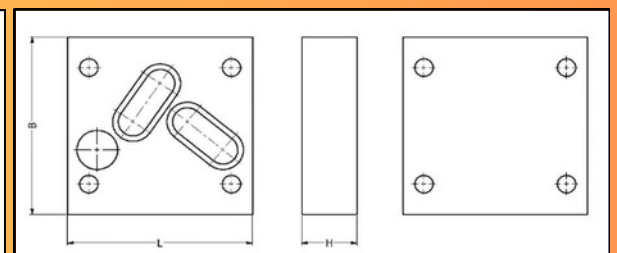
Model code	Plate size (mm)			O – Ring details
	L	B	H	
CYCP-NG06 -MN-O CYCP-	54	45	12	9.81x1.5
NG06-PA-BT-MN-O CYCP-	54	45	12	TO SUIT
NG06-PB-AT-MN-O CYCP-	54	45	12	TO SUIT
NG10 -MN-O CYCP-NG10-	70	70	21	13x1.6
PA-BT-MN-O CYCP-NG10-	70	70	21	TO SUIT
PB-AT-MN-O	70	70	21	TO SUIT



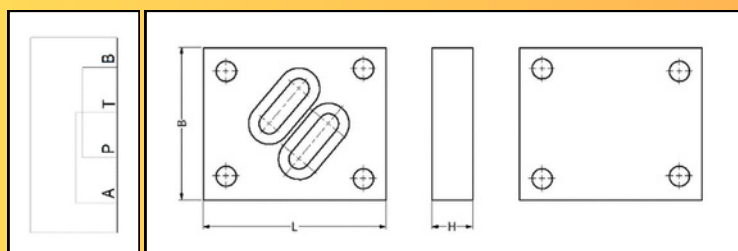
#### Dimension details:



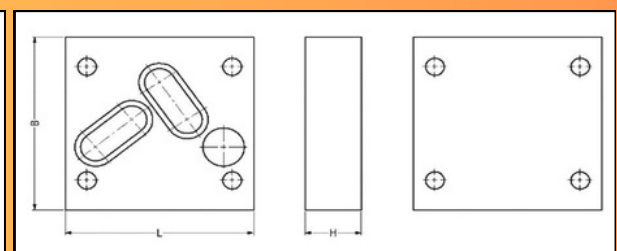
(PA-BT) (NG06)



(NG10)



(PB-AT) (NG06)

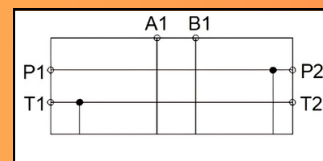


(NG10)

## 04. Multi Station Manifold Block

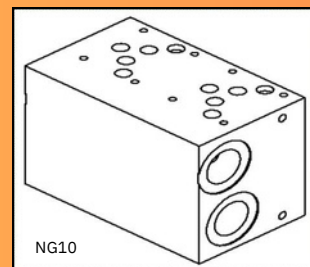
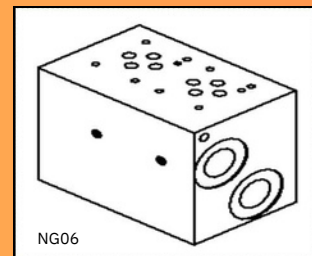
### Description:

Multi station manifold block allows to stack the valves array and provide hydraulic connections to move the actuator.



### Technical Specifications:

Port Connection	as per ISO 228 as per CETOP 3, CETOP
Valve Mounting pattern	5
Material (Pressure rating)	GGG40 (315 bar) C45 (400 bar)
No. of station	2, 3...5
Surface coating	Code "MN": Manganese phosphating No code: No surface coating

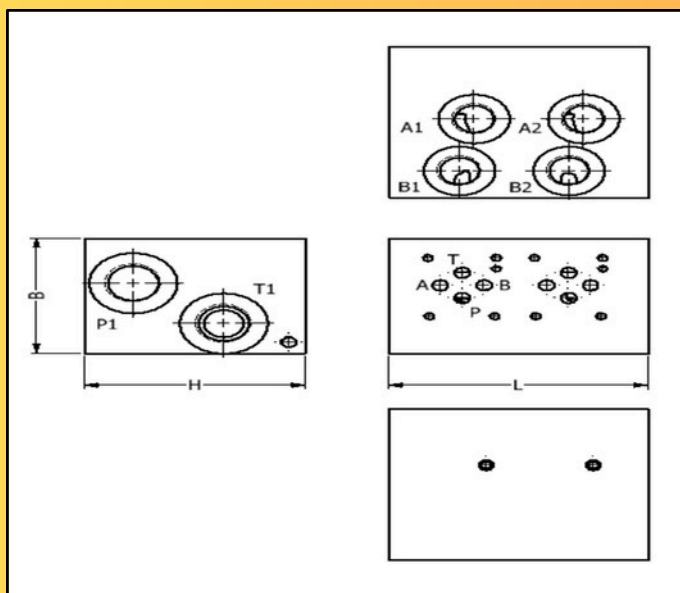


### Selection Table:

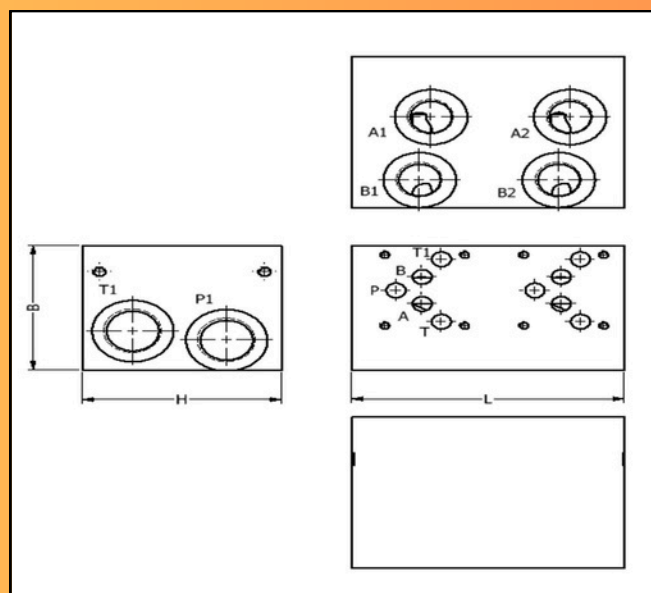
Model code	Port Size	Port Size	Plate size (mm)		
	P, T	A, B	L	B	H
CYMSB-NG06-2-MN	G3/4"	G1/2"	123	80	105
CYMSB-NG06-3-MN	G3/4"	G1/2"	175	80	105
CYMSB-NG06-4-MN	G3/4"	G1/2"	230	100	90
CYMSB-NG06-5-MN	G3/4"	G1/2"	280	100	90
CYMSB-NG10-2-MN	G1"	G3/4"	157	95	115
CYMSB-NG10-3-MN	G1"	G3/4"	239	95	115

*\*other variants, with respect to port sizes and stacks, available on request.*

### Dimension details:



(MSB-NG06)



(MSB-NG10)





**ATCO**



## HYDRAULIC MANIFOLD BLOCKS

FOR CUSTOM MANIFOLD BLOCKS,  
CONTACT US:

ATCO GMBH  
TEL.: 09352 / 600549 | MOBIL: +49(0) 172 6178979  
EMAIL: [INFO@ATCOGMBH.COM](mailto:INFO@ATCOGMBH.COM)  
[WWW.ATCOGMBH.COM](http://WWW.ATCOGMBH.COM)